

**GENERAL NOTES**

- WHERE USED, THE TERM 'PROVIDE' SHALL MEAN 'FURNISH AND INSTALL'.
- ELEVATIONS NOTED ARE FROM 0'-0" ABOVE FINISHED FLOOR.
- DO NOT SCALE DRAWINGS.
- COORDINATE PLUMBING INSTALLATION WITH ALL OTHER TRADES PRIOR TO INSTALLATION. COORDINATE ALL SERVICES WITHIN WALLS WITH ELECTRICAL PANELS, UTILITY STATIONS, LOW WALL RETURNS, ETC. COORDINATE CONNECTION SIZES AND LOCATIONS WITH APPROVED SHOP DRAWINGS AND / OR PIPES PRIOR TO INSTALLATION. COORDINATE UNDERGROUND PIPING WORK WITH SITE / CIVIL AND UTILITY DRAWINGS PRIOR TO STARTING WORK.
- VALVES SHALL BE INSTALLED IN AN ACCESSIBLE LOCATION. VALVES INSTALLED IN INTERSTITIAL LEVELS SHALL BE ACCESSIBLE FROM EQUIPMENT PLATFORMS, ACCESS LEVELS, CONCRETE FLOORS, OR WALKABLE CEILING AREAS. PROVIDE AND LOCATE ACCESS PANELS IN NON ACCESSIBLE CEILING AREAS AND WALLS FOR PROPER MAINTENANCE ACCESS TO VALVES AND ACCESSORIES. COORDINATE LOCATIONS WITH OTHER TRADES. SEE ARCHITECTURAL SPECIFICATIONS FOR ACCESS PANEL REQUIREMENTS.
- FOR ALL PENETRATIONS, CONTRACTOR IS RESPONSIBLE FOR MAINTAINING INTEGRITY OF RATED ASSEMBLIES. PROVIDE U.L. FIRESTOP SYSTEMS WHERE REQUIRED. COORDINATE WITH ARCHITECT IF NEEDED.
- FIELD VERIFY CONDITIONS (IE-INS, INTERFERENCES, ETC.) PRIOR TO STARTING WORK. NOTIFY CONSTRUCTION MANAGER IMMEDIATELY OF ANY DISCREPANCIES WITH PLANS.
- HANDLE MATERIAL DEBRIS IN AN EFFORT TO AVOID ANY DISRUPTIONS OF ONGOING BUILDING OPERATIONS. CLEAN PROJECT SITE DEBRIS AT THE END OF EACH WORK DAY.
- INSTALL ALL PLUMBING COMPONENTS AND ACCESSORY MATERIALS ACCORDING TO THE MANUFACTURER'S RECOMMENDATIONS.
- SLOPE ALL PIPING PER PIPES AND AS NOTED ON PLANS. SEE PIPING SPECIFICATIONS FOR MINIMUM SLOPE REQUIREMENTS. SLOPE WASTE PIPING 2 1/2" AND SMALLER AT 1/4" PER FOOT UNLESS NOTED OTHERWISE. SLOPE WASTE PIPING 3" AND LARGER AT 1/8" PER FOOT UNLESS NOTED OTHERWISE. SLOPE VENT PIPING TO DRAIN TOWARDS THE DRAINAGE RISER UNLESS NOTED OTHERWISE.
- VENT THROUGH ROOF SHALL EXTEND THROUGH THE FLASHING AND TERMINATE VERTICALLY AT CODE REQUIRED HEIGHT ABOVE FINISHED ROOF.
- FOR PLUMBING SYMBOLS AND ABBREVIATIONS, RE: M-0000.
- SEE SPECIFICATIONS, DETAILS, AND SCHEDULES FOR ADDITIONAL REQUIREMENTS (INSULATION, HANGERS, IDENTIFICATION, EQUIPMENT, TESTING, ETC.).
- THE PLUMBING PLANS ARE TO A GREAT EXTENT SCHEMATIC IN NATURE. THE CONTRACTOR SHALL OBTAIN EXACT LOCATIONS, MEASUREMENTS, LEVELS, ETC. AT THE SITE AND SHALL SATISFACTORILY ADAPT HIS WORK TO THE ACTUAL CONDITIONS.

**SHEET NOTES**

- WASTE RISER CAPPED 12" ABOVE THIS FLOOR.
- FPWL CENTER LINE 10" ABOVE FINISHED FLOOR.
- CONNECT VENT LINE A MINIMUM OF 6" ABOVE FLOOR RIM OF JANITOR SINK.
- REFER TO ARCHITECTURAL DRAWINGS FOR ROOF DRAIN DETAIL.
- BALANCE VALVE SET @ 0.25GPM.
- 1/2" COLD WATER LINE DOWN TO REFRIGERATOR WALL BOX WITH QUARTER TURN BALL VALVE AND WATER HAMMER ARRESTOR.
- 1/2" COLD WATER LINE DOWN TO COFFEE MAKER WALL BOX WITH QUARTER TURN BALL VALVE AND WATER HAMMER ARRESTOR.
- 1/2" HOT AND COLD WATER LINE DOWN TO BREAK ROOM SINK.
- 1/2" HOT WATER DOWN TO DISHWASHER.
- PROVIDE 2" STAND PIPE FOR DISHWASHER DISCHARGE.
- WASTE LINE FROM BREAK ROOM SINK AND DISHWASHER SHALL BE ROUTED ABOVE THE FLOOR IN CABINET TOE KICK SPACE TILL PAST BEAM AT COLUMN LINE.
- PROVIDE CLEAROUT IN FRONT OF THE CABINETS AND AT EACH 90 DEGREE CHANGE IN DIRECTION.

**CLIENT**

**Agilent Technologies**

7051 Eagle Blvd, Frederick, Colorado 80504, USA

**CONSULTING ARCHITECT/ENGINEER**

**CLARK, RICHARDSON & BISKUP**  
CONSULTING ENGINEERS, INC.  
CRB ARCHITECTS-ENGINEERS P.C.

11101 WEST 120TH AVENUE  
SUITE 160  
BROOMFIELD, CO 80021  
PHONE: 303-993-1820  
FAX: 303-993-1822

REV	BY	DATE	DESCRIPTION
0	ADS	08/18/2017	ISSUE FOR CONSTRUCTION
1	ADS	10/09/2019	RECORD DRAWING

**LICENSEE**

**Confidential to Agilent Technologies**

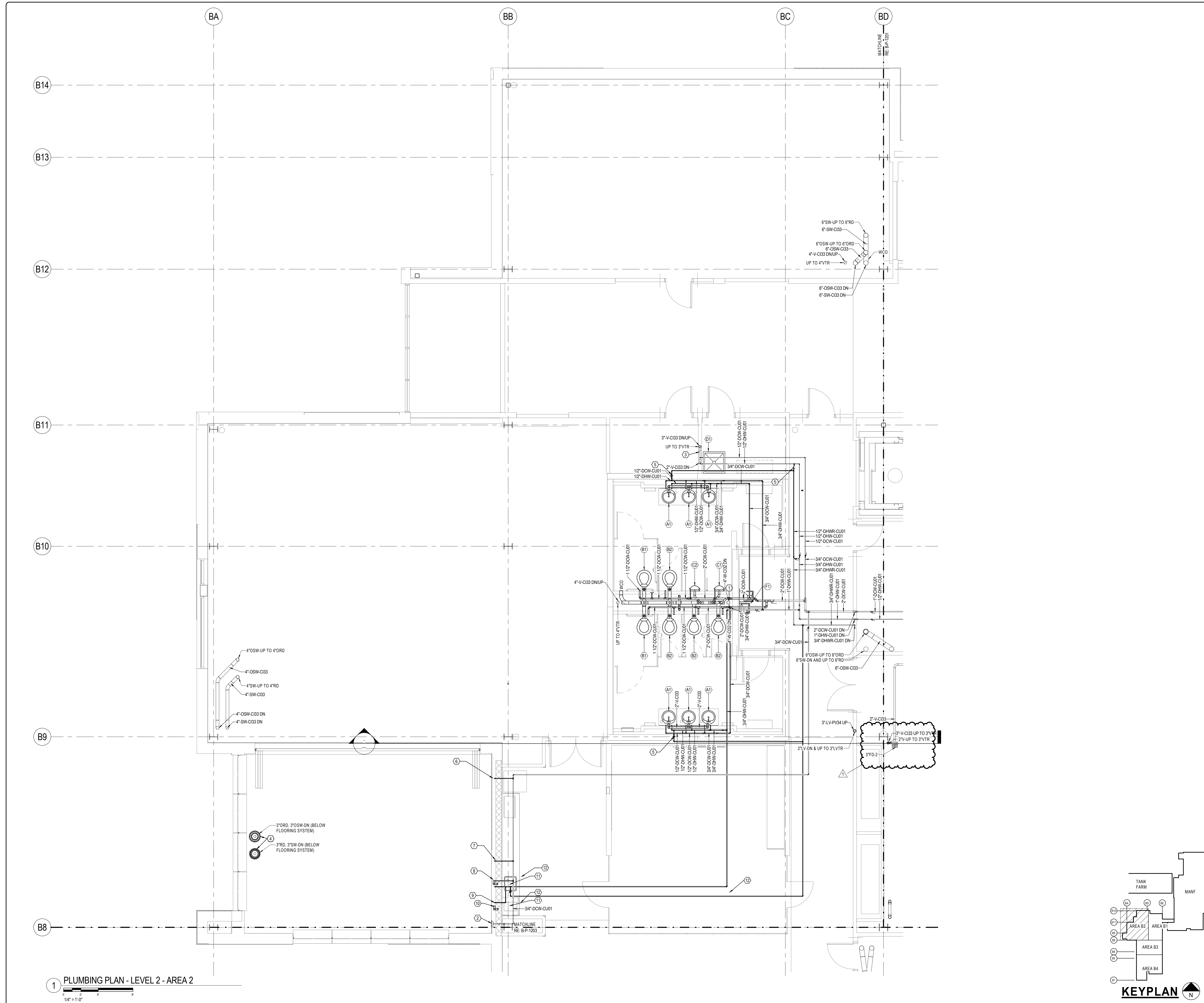
PROJ. NO. 151948	DESIGNED BY: BNC
SCALE: 1/4" = 1'-0"	CHECKED BY: KSK
SHEET SIZE: 30x42	APPROVED BY: ADS

DRAWING TITLE

**PLUMBING PLAN  
LEVEL 2  
AREA 2**

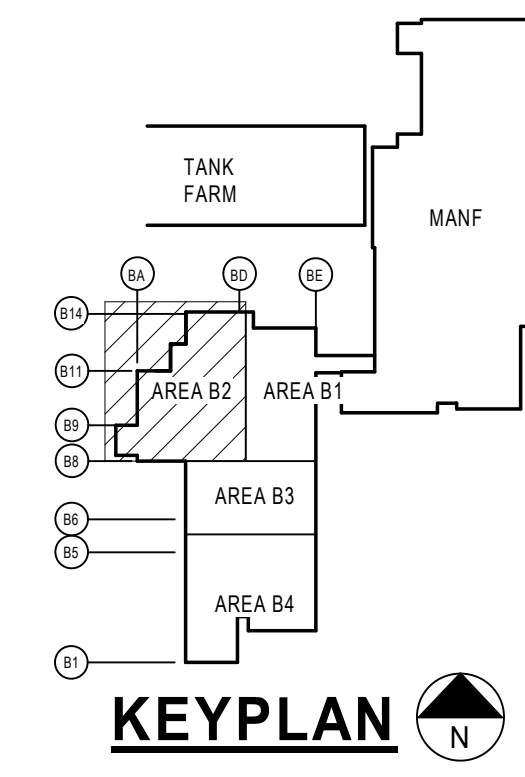
DRAWING NUMBER

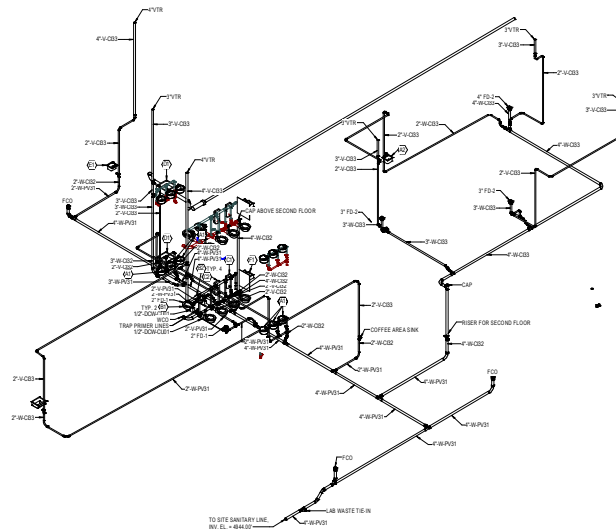
**US-CO-FDK-  
B-P-1202**



**1 PLUMBING PLAN - LEVEL 2 - AREA 2**

1/4" = 1'-0"





1 SANITARY WASTE & VENT RISER DIAGRAM PKG. 2  
NOT TO SCALE

CLIENT

**Agilent Technologies**  
7051 Eagle Blvd, Frederick, Colorado 80504, USA

CONSULTING ARCHITECT/ENGINEER  
**CLARK, RICHARDSON & BERKUP**  
CONSULTING ENGINEERS, INC.  
CSE ARCHITECTS/ENGINEERS P.C.  
1101 WEST 120TH AVENUE  
SUITE 200  
BROOMFIELD, CO 80021  
PHONE: 303-963-1600  
FAX: 303-963-1822

REV	BY	DATE	DESCRIPTION
1	AD	10/28/19	ISSUE FOR CONSTRUCTION
2	AD	10/28/19	RECORD DRAWING

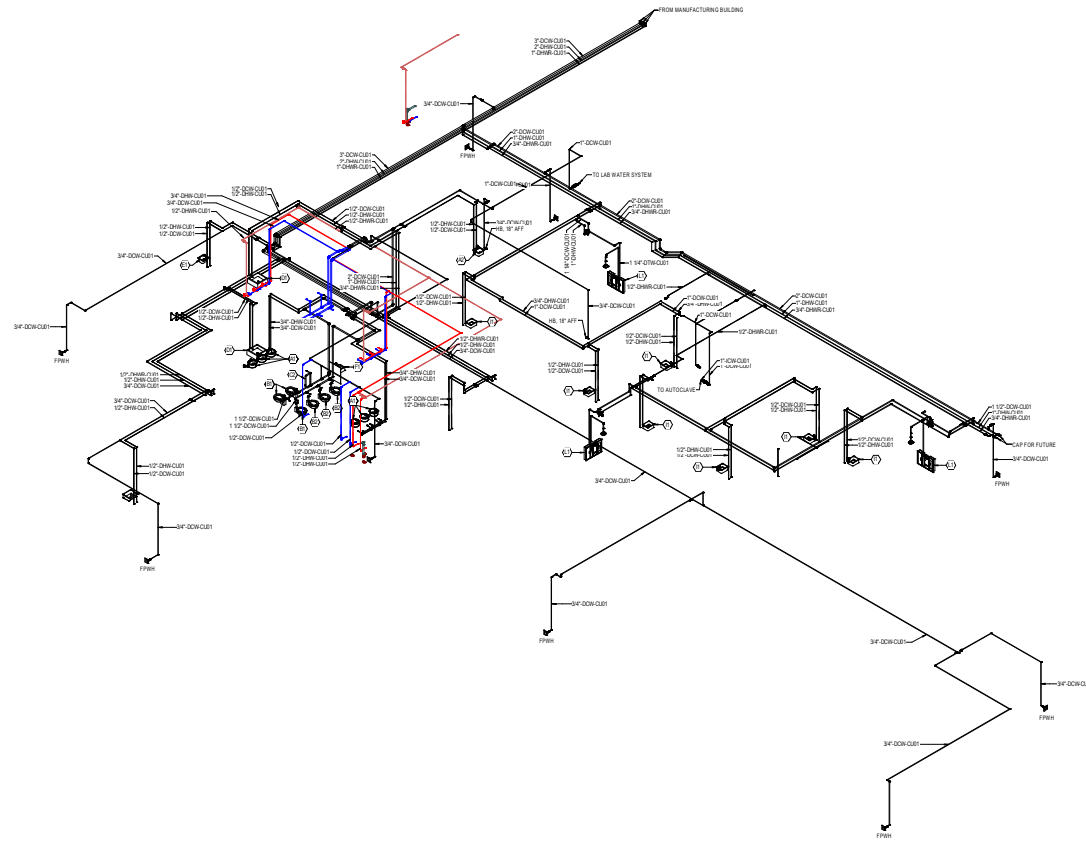
REVISIONS

Confidential to Agilent Technologies

DRAWING NO.	10198	DESIGNED BY	BPJ
SCALE	AS SHOWN	CHECKED BY	AD
SHEET SIZE	30x42	APPROVED BY	AD

DRAWING TITLE  
**PLUMBING WASTE AND VENT  
RISER DIAGRAM**

DRAWING NUMBER  
**US-CO-FDK-  
B-P-5000**



1 PLUMBING WATER RISER DIAGRAM PKG. 2  
REF TO 554E

CLIENT  
**Agilent Technologies**  
 7051 Eagle Blvd, Frederick, Colorado 80504, USA

CONSULTING ARCHITECT/ENGINEER  
 CLARK, RICHARDSON & BERKUP  
 CONSULTING ENGINEERS, INC.  
 CSE ARCHITECTS/ENGINEERS P.C.  
 1181 WEST 120TH AVENUE  
 SUITE 201  
 BROOMFIELD, CO 80021  
 PHONE: 303-963-1600  
 FAX: 303-963-1822

NO.	BY	DATE	DESCRIPTION
1	AD	10/28/19	ISSUE FOR CONSTRUCTION
2	AD	10/28/19	RECORD DRAWING

REVISIONS

Confidential to Agilent Technologies

PROJ. NO.	SYSTEM	DESIGNED BY	APP.
SCALE	DATE	CHECKED BY	INC.
SHEET SIZE	DATE	APPROVED BY	

DRAWING TITLE  
**PLUMBING WATER  
 RISER DIAGRAM**

DRAWING NUMBER  
**US-CO-FDK-  
 B-P-5001**